

BELMED

Nitrous Oxide/Oxygen Sedation Equipment



2016 Price List

BELMED INC.

www.belmedinc.com
888-723-5893

Mail to:

PO Box 247
Red Lion, PA 17356-0247

Ship to:

887 Delta Rd.
Red Lion, PA 17356-0247

Contact Us:

717-246-5500
Fax: 717-246-7586
bmi@belmedinc.com

Tech Support:

help@belmedinc.com

Order:

orders@belmedinc.com
Fax: 717-246-7586

This price list is effective January 2016, and supersedes all previous price lists. Minimum order \$25

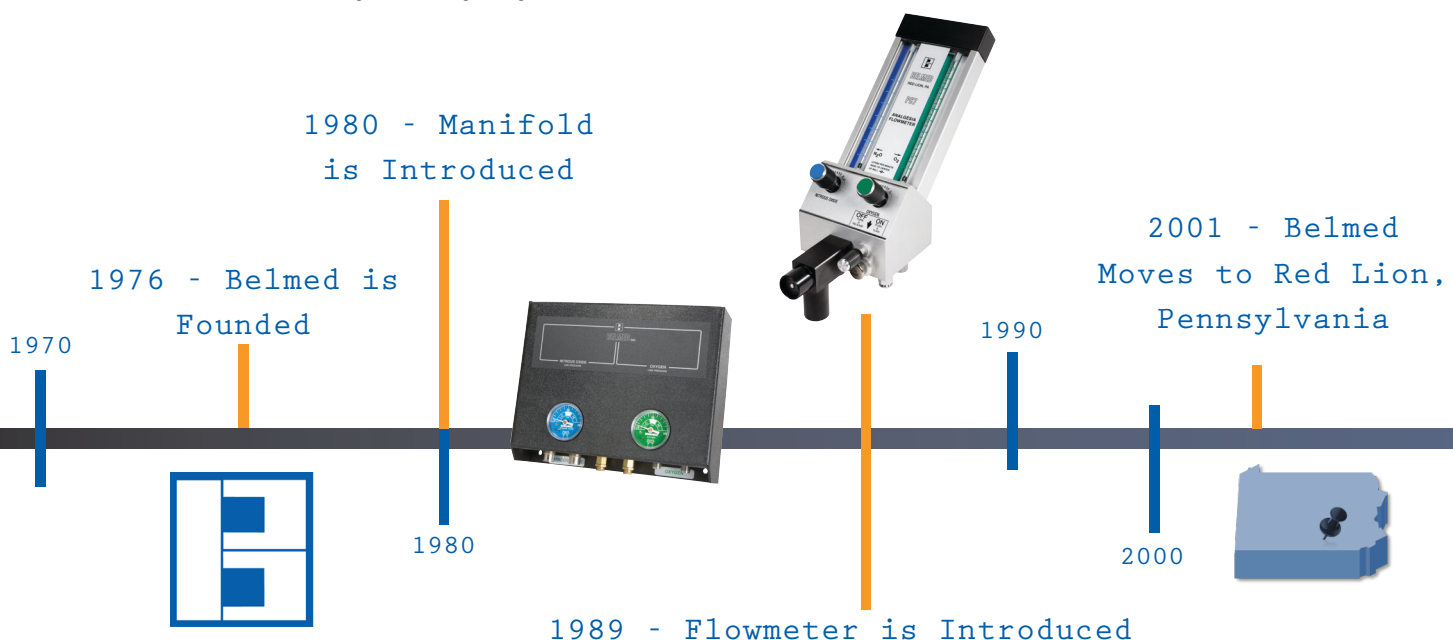
BELMED....what's in a name? 40 Years of KNOW-HOW 1976-2016

Belmed was founded on the principle of bringing **quality products** to the industry. We strive to consistently generate **new technology** to keep you on the **cutting edge**. See the product time line below to **see what's new!**

The measure of a company is the sum of its parts, the level of quality, integrity and its customers' satisfaction.

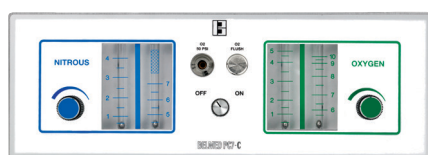
You, **OUR CUSTOMERS**, are our **MOST IMPORTANT** asset.

We **THANK YOU** for your loyalty.



INDEX

Defender Automatic Changeover Manifold	28-29
Defender Zone Valve	29
Fittings	39
Flowmeter O2 Therapy	37
Flowmeter Oral Surgery	33-34
Flowmeter Stands, Mounts, Brackets, Adapters.....	5-8
Flowmeter Systems O2/N2O	2-4,9-11
Hoses	16-18
Manifold Replacement Parts	33
Manifold Systems O2/N2O	28-32
Nitrogen Equipment.....	36-37
Oral Surgery	33-37
Outlet Replacement Parts	24-27
Outlets	21-27
Policies	41
Quick Connects/Couplers.....	19
Ratio Flow Control.....	8
Regulators	38
Resuscitation Equipment.....	14-15
Scavenger Rubber Goods	12-13
Shut-Off Valves.....	20
Vacuum Collection Systems	35
Yoke Block Replacement Parts	6
Yoke Blocks O2/N2O for “E” Cylinders	5
Zone Valve.....	29, 31



2009 - PC7-C Flushmount
Flowmeter is Introduced

2010

2015 - Defender Automatic
Changeover Manifold is Introduced

NEW!
See page 28 & 29

2020



PC - 7 FLOWMETER

FLOWMETER HEAD DIMENSIONS
8.75"H X 3.75"W X 10.25"D

WEIGHT OF FLOWMETER HEAD
5 LBS

BAG AND OUTLET DIAMETER
22MM (APPROX. 7/8")

OXYGEN FLOW RANGE
3-10 LPM

NITROUS OXIDE FLOW RANGE
0-7 LPM

FAIL-SAFE TYPE
PROPORTIONAL



Flowmeter Head Only PC7 \$1,650.00

5000 - Includes: Head and Mounting Adapter

NOTE: Specify Mounting Adapter. See page 8 for Mounting Adaptor Options

FLOWMETER SYSTEMS

Flowmeter System with Scavenger Rubber Goods\$2,298.00

5001S Includes:
Head, Scavenger Inhaler, Tube, Bag
NOTE: Specify Mounting Adapter.
See page 8 for Mounting Adaptor
Options



Flowmeter System with Short Mobile Stand\$2,598.00

5002-SH-S Includes:
Head, Short Mobile
Stand (Hght. 30"-40"),
Scavenger Rubber
Goods



Flowmeter System with Mobile Stand\$2,598.00

5002S Includes:
Head, Tall Mobile
Stand (Hght. 42"-52"),
Scavenger Rubber
Goods



Flowmeter System with 2 Cylinder Yoke Block\$4,050.00

5132-S Includes:
Head, Tall Mobile
Stand, Scavenger
Rubber Goods, 2
Cylinder Yoke Block,
DISS Hoses (3ft.)



Flowmeter System with 4 Cylinder Yoke Block\$4,250.00

5142-S Includes:
Head, Tall Mobile
Stand, Scavenger
Rubber Goods, 4
Cylinder Yoke Block,
DISS Hoses (3ft.)



FLOWMETER SYSTEMS

Flowmeter System with Telescoping Arm\$2,598.00

5003-T-S Includes:
Head, Telescoping
Arm, Scavenger
Rubber Goods



Flowmeter System with Stationary Arm\$2,598.00

5003-S-STA Includes:
Head, Stationary
Arm, Scavenger
Rubber Goods



Flowmeter System with 8" Swivel Arm\$2,598.00

5003-S-SW Includes:
Head, 8" Swivel
Arm, Scavenger
Rubber Goods



Flowmeter System with 8" Double Swivel Arm\$2,598.00

5003S-DSW Includes:
Head, 8" Double
Swivel Arm,
Scavenger
Rubber Goods



Flowmeter System with Cabinet Mount Flipout Bracket\$2,598.00

5004-S Includes:
Head, Cabinet
Mount Flipout
Bracket, Scavenger
Rubber Goods



STANDS AND YOKES

Short Stand \$326.00

20.5" High with 8" Height Adjustment

5010-SH-BD	Belmed, Accutron PC	
5010-SH-FS	Fraser, Matrx	\$356.00
5010-SH-PR	Porter, Coastal	\$356.00
5010-SH-MK	McKesson MDT, Anamor II, III, IV	\$356.00



Tall Stand \$326.00

41" High with 8" Height Adjustment

5010-TS-BD	Belmed, Accutron PC	
5010-TS-FS	Fraser, Matrx	\$356.00
5010-TS-PR	Porter, Coastal	\$356.00
5010-TS-MK	McKesson MDT, Anamor II, III, IV	\$356.00



Tall Stand with 2 Cylinder Yoke Block



5210-BD	Belmed, Accutron PC	\$1,910.00
5210-FS	Fraser, Matrx	\$1,950.00
5210-PR	Porter, Coastal	\$1,950.00
5210-MK	McKesson MDT, Anamor II, III, IV	\$1,950.00

Tall Stand with 4 Cylinder Yoke Block



5410-BD	Belmed, Accutron PC	\$2,110.00
5410-FS	Fraser, Matrx	\$2,150.00
5410-PR	Porter, Coastal	\$2,150.00
5410-MK	McKesson MDT, Anamor II, III, IV	\$2,150.00

2 Cylinder Yoke Block \$1,600.00

5013 Includes: One O2 Yoke, One N2O Yoke, Block, Gauges, Regulators, 36" DISS Hoses, Cylinder Wrench
Fits All Belmed Mobile Stands, 4 Caster Porter, Accutron PC, and Fraser Tall Mobile Stands



4 Cylinder Yoke Block \$1,800.00

5014 Includes: Two O2 Yokes, Two N2O Yokes, Block, Gauges, Regulators, 36" DISS Hoses, Check Valves, Cylinder Wrench, Yoke Plug
Fits All Belmed Mobile Stands, 4 Caster Porter, Accutron PC, and Fraser Tall Mobile Stands

STANDS AND YOKES

YOKE BLOCK REPLACEMENT PARTS



5014-20

High Pressure Gauge – Oxygen

\$70.00



5014-17

High Pressure Gauge – Nitrous Oxide

\$70.00



5014-4

Tee Handle, Yoke

\$28.00



5014-34

Turn Wheel Handle, Yoke

\$28.00



5014-32

Cylinder Wrench

\$10.00



5014-33

Yoke Plug

\$30.00

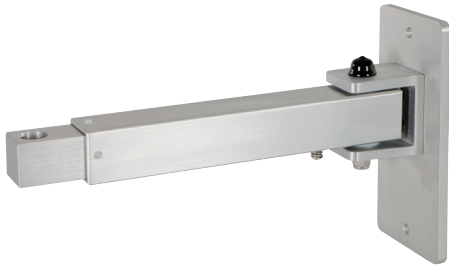


5014-35

Cylinder Seals
Reusable Metal/Viton (Set of 4)

\$20.00

MOUNTING BRACKETS



Telescoping Wall Arm \$320.00

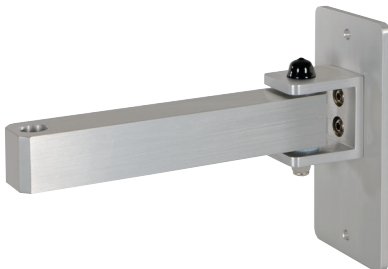
5011-TL-BD	Belmed	
5011-TL-FS	Fraser, Matrx	\$320.00
5011-TL-PR	Porter, Coastal, Accutron PC	\$360.00
5011-TL-MK	McKesson MDT, Analor II, III, IV	\$360.00



Double Swivel Wall Arm \$320.00

Will Fit 10" Wide Cabinet

5011-DS-BD	Belmed	
5011-DS-FS	Fraser, Matrx	\$320.00
5011-DS-PR	Porter, Coastal, Accutron PC	\$360.00
5011-DS-MK	McKesson MDT, Analor II, III, IV	\$360.00



8" Swivel Arm \$320.00

5011-SW-BD	Belmed	
5011-SW-FS	Fraser, Matrx	\$320.00
5011-SW-PR	Porter, Coastal, Accutron PC	\$360.00
5011-SW-MK	McKesson MDT, Analor II, III, IV	\$360.00



Cabinet – Flipout Bracket \$320.00

5012-BD	Belmed	
5012-FS	Fraser, Matrx (Top Mount Only)	\$320.00
5012-PR	Porter, Coastal, Accutron PC	\$360.00



Stationary Arm \$320.00

5011-ST-BD	Belmed	
5011-ST-FS	Fraser, Matrx	\$320.00
5011-ST-PR	Porter, Coastal, Accutron PC	\$360.00
5011-ST-MK	McKesson MDT, Analor II, III, IV	\$360.00

MOUNTING ADAPTERS



2" Post Mount

5005-PM-BD	Belmed	\$320.00
5005-PM-FS	Fraser, Matrx – MDM and RA Top Mount Only	\$320.00
5005-PM-PR	Porter, Coastal, Accutron PC	\$360.00



Arm Adapter

5100-WC-BD	Belmed Head to Belmed Wall Arm or Cabinet Bracket	\$46.00
5100-WC-PR	Belmed Head to Porter, Accutron PC Wall Arm	\$46.00
5100-WC-FS	Belmed Head to Fraser, Matrx Wall Arm	\$46.00



Mobile Stand Adapter



5100-MS-BD	Belmed Head to Belmed, Accutron PC Mobile Stand	\$50.00
5100-MS-PR	Belmed Head to Porter, Coastal Mobile Stand	\$50.00
5100-MS-FS	Belmed Head to Fraser, Matrx Mobile Stand	\$50.00



5100-TM-FS	Top Mount Adapter – Fraser, Matrx Top Mount Block and Stud Fraser, Matrx MDM or RA Flowmeter	\$140.00
------------	--	----------



5100-ST-FS	Stud – Fraser, Matrx Mounting Stud 5/8" Dia. X 3" Length RA or MDM	\$56.00
------------	---	---------



5100-AD-FS	MS Adapter Fraser, Matrx RA or MDM to Belmed Mobile Stand	\$56.00
------------	--	---------

RATIO FLOW CONTROLS

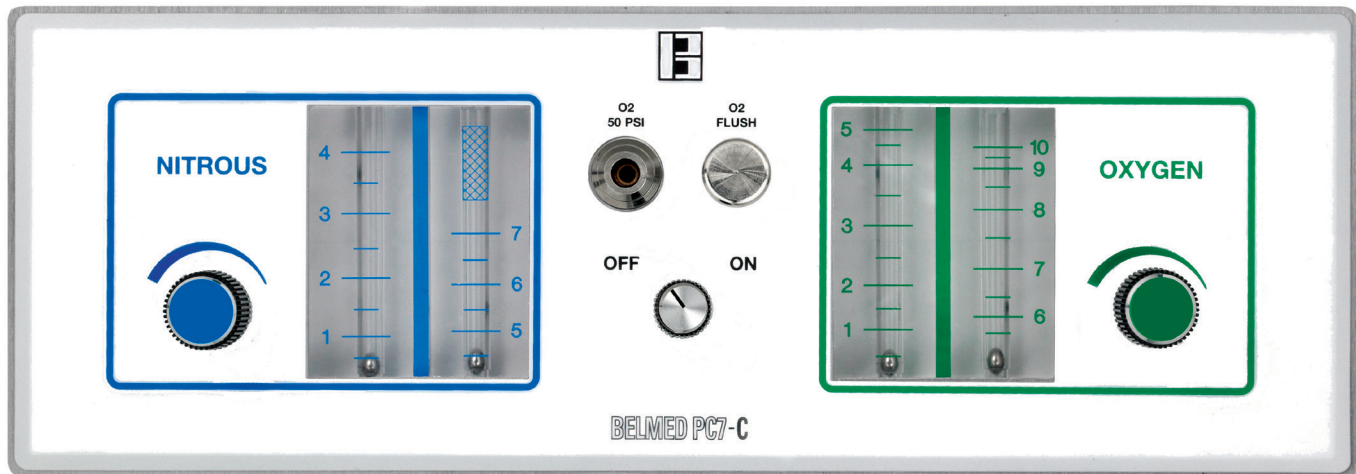


5000-93	Ratio Flow Control for PC7	\$140.00
5000-93F	Ratio Flow Control for PC7-C	\$140.00

O2 flow rate can be reduced to as low as 1 liter per minute to match patient breathing volumes while still maintaining minimum 30% O2 and 70% maximum N2O

PC7-C FLUSHMOUNT FLOWMETER

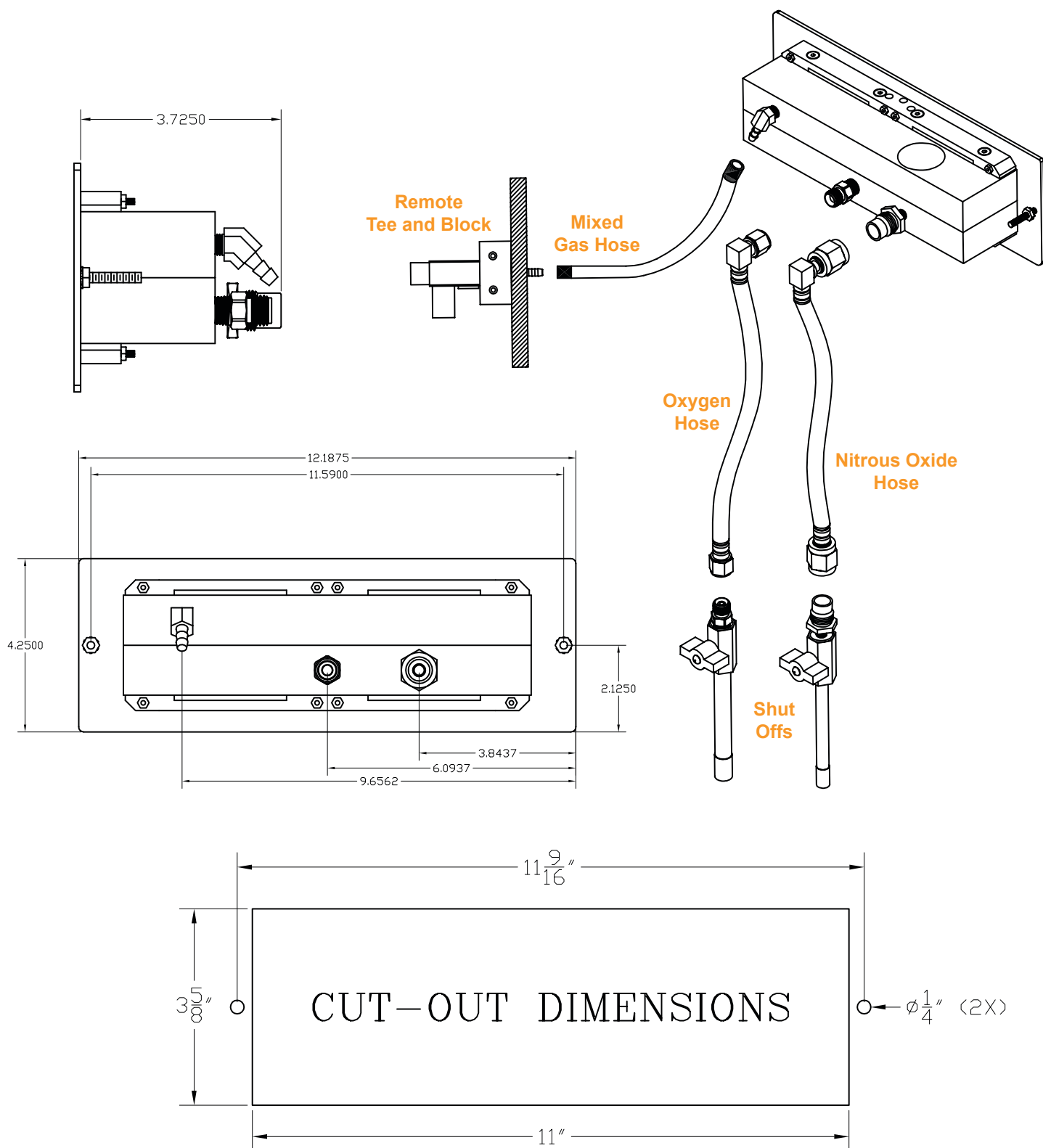
THE PC7-C HAS BEEN RECONFIGURED TO FIT FLUSH INTO TODAY'S CABINETRY AND PROVIDES THE SAME TIME PROVEN PRECISION AND DEPENDABILITY AS OUR STANDARD PC-7 UNIT.



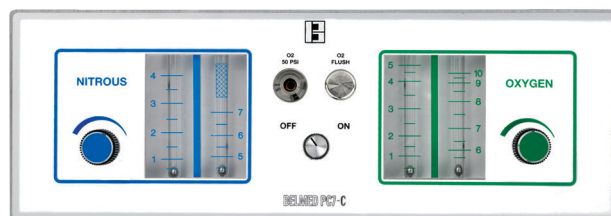
DIMENSIONS - 4.25" H X 12.187" W X 4.687" D

- **ON/OFF CONTROL.** SIMPLE 1/4 TURN, ESTABLISHES A 3 LITER MINIMUM O2 FLOW.
- **OXYGEN FLUSH.** PROVIDES RAPID FLOW OF OXYGEN DIRECTLY INTO PATIENT BREATHING CIRCUIT.
- **MICROMETER NEEDLE VALVES.** ALLOW QUICK, RESPONSIVE FLOW ADJUSTMENTS. NEEDLE VALVE DESIGN PREVENTS SEAT DAMAGE.
- **MINIMUM 30% O2.** IS ACHIEVED BY LIMITING FLOWS TO A MINIMUM OF 3 LITERS FOR O2 AND A MAXIMUM OF 7 LITERS FOR N2O.
- **DUAL CASCADING FLOWMETER TUBES.** O2 AND N2O ARE CALIBRATED IN LITERS PER MINUTE.
- **OXYGEN FAIL-SAFE.** AUTOMATICALLY AND PROPORTIONALLY REDUCES N2O IN THE EVENT O2 IS REDUCED OR SHUT OFF.
- **SOLID GAS CONTROL BLOCK.** DESIGNED TO ELIMINATE INTERNAL GAS LEAKS.
- **O2 QUICK CONNECT.** PROVIDES CONNECTION OF AUXILIARY RESUSCITATION EQUIPMENT.
- **NRB CHECK VALVE.** PREVENTS THE REBREATHING OF EXPIRED GASES AND GUARDS AGAINST CO2 BUILD-UP.
- **EMERGENCY AIR VALVE.** ENTRAINS AMBIENT AIR INTO THE BREATHING CIRCUIT IN THE EVENT FLOW FROM THE MACHINE IS LOST FOR ANY REASON.

FLUSHMOUNT FLOWMETER SYSTEM



FLUSHMOUNT FLOWMETER SYSTEM



Flowmeter Head Only PC7-C \$3,274.00

5500 Includes:
Flushmount Flowmeter, Remote Breathing Circuit, 10ft. Mixed Gas Hose

Flowmeter System PC7-C \$3,786.00

5501 Includes:
Flushmount Flowmeter, Remote Breathing Circuit, Scavenger Rubber Goods, 10ft. Mixed Gas Hose,
5ft Supply Tubings, 1/4 turn shut-off valves for O2 and N2O



FLUSHMOUNT FLOWMETER PARTS



5500-500

Remote Breathing Circuit
Can be Mounted Vertically or Horizontally

\$306.00



5500-600

Accessory Angle
Top or Slide Mount for Remote
Breathing Circuit

\$152.00



5500-700

Sliding Bracket
Includes: Accessory Angle
Top or Side Mount – Extends Min. 12"
to Max. 27"

\$250.00



8030

O2 Supply Tubing
5ft. Long DISS X 90° DISS
(May be Ordered to Custom Lengths)

\$122.00



8031

N2O Supply Tubing
5ft. Long DISS X 90° DISS
(May be Ordered to Custom Lengths)

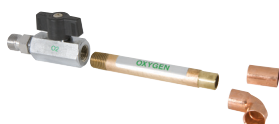
\$122.00



7302

N2O Shut-Off Valve Assembly
Silver-Solder Type Shut-Off with Stainless
Steel Ball Valve and DISS Check Valve

\$122.00



7304

O2 Shut-Off Valve Assembly
Silver-Solder Type Shut-Off with Stainless
Steel Ball Valve and DISS Check Valve

\$122.00

SCAVENGER

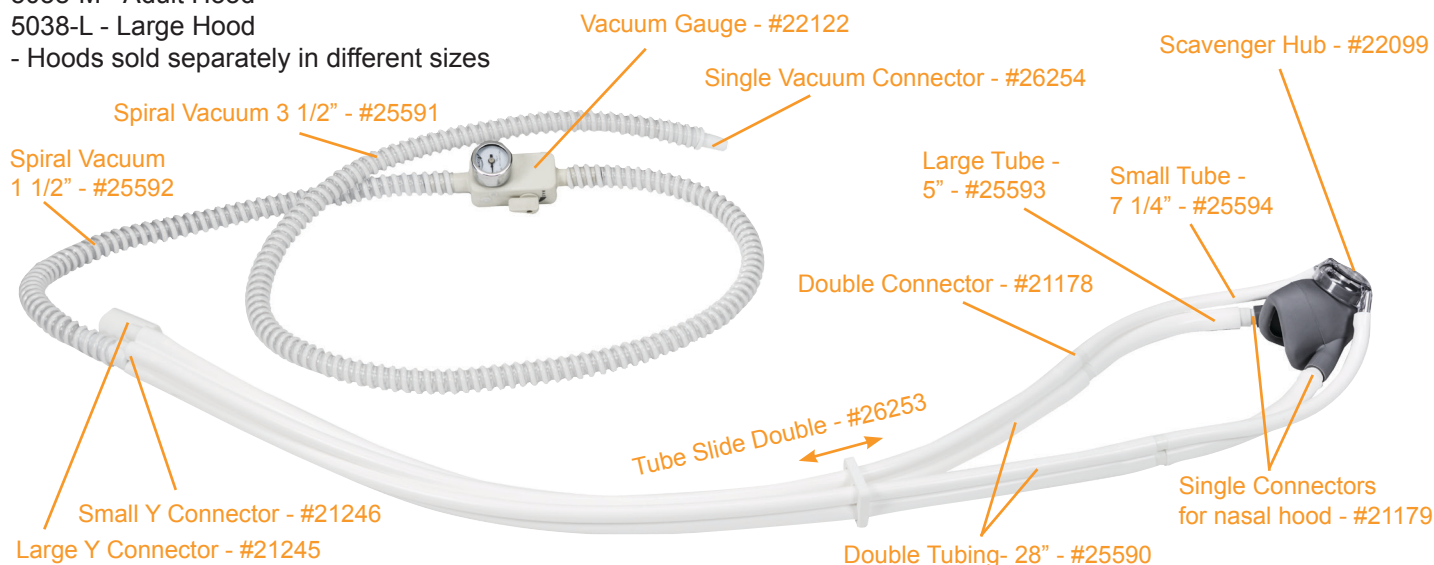
Scavenger Inhaler\$598.00

5038-S - Small (Pedo) Hood

5038-M - Adult Hood

5038-L - Large Hood

- Hoods sold separately in different sizes



Scavenger Package\$668.00

5039-S

Includes:

5039-M

Scavenger Inhaler with Autoclavable Hood, (specify size: S,M,L),

5039-L

3L Breathing Bag, 22mm I. D. X 32" Length Breathing Tube



RUBBER GOODS



5025

Breathing Tube
22mm I. D. X 32" Length, Corrugated

\$35.00

5027

Breathing Tube Large
22mm I. D. X 72" Length, Corrugated

\$54.00



5026-N

Breathing Bag
3L Neoprene

\$38.00

SCAVENGER REPLACEMENT PARTS



21178

Double Connector
for Scavenging Circuit (2/pkg)

\$28.00



21179

Single Connector
for Nasal Hood (2/pkg)

\$28.00

SCAVENGER

SCAVENGER REPLACEMENT PARTS (CONT.)

	21245	Large "Y" Connector for Scavenging System	\$28.00
	21246	Small "Y" Connector for Scavenging System	\$28.00
	22099	Scavenger Hub (Clear Disk)	\$48.00
	22122	Vacuum Gauge	\$140.00
	25590	Double Tubing (2/pkg)	\$56.00
	25591	Spiral Vacuum – 3 1/2'	\$15.00
	25592	Spiral Vacuum – 1 1/2'	
	25593	5" Large Tube (Order 2)	\$15.00
	25594	7 1/4" Small Tube (Order 2)	
	26253	Tube Slide Double	\$28.00
	26254	Single Vacuum Connector	\$15.00
	51055	90° Elbow – 22mm I. D. X 22mm O.D.	\$20.00
	5031-S	Hood, Multi-Use Small (Pedo)	\$98.00
	5031-M	Hood, Multi-Use Medium (Adult)	
	5031-L	Hood, Multi-Use Large	

EMERGENCY OXYGEN EQUIPMENT

MANUAL RESUSCITATOR

Portable System\$700.00

5048 Includes:
"E" Cylinder Cart, 0-15LPM Regulator, Manual
Resuscitator, Adult Face Mask, Cylinder Wrench



Manual Resuscitator.....\$198.00

5043 Includes:
Resuscitator with Adult Face Mask



DEMAND VALVE

Portable System\$1,098.00

5041 Includes:
"E" Cylinder Cart, Demand Valve,
50psi Regulator, Child Face Mask,
Adult Face Mask, Cylinder Wrench



Demand Valve – Imperial\$620.00

5040 Includes:
Demand Valve, 8ft Hose with Imperial Quick Connect, Adult Face
Mask, Child Face Mask



Demand Valve – Puritan.....\$620.00

5040- Includes:
2CPN Demand Valve, 8ft Hose with Puritan Quick Connect, Adult Face
Mask, Child Face Mask



Demand Valve – Ohio.....\$620.00

5040- Includes:
2COH Demand Valve, 8ft Hose with Ohio Quick Connect, Adult Face
Mask, Child Face Mask



Demand Valve – Chemetron\$620.00

5040- Includes:
2CCN Demand Valve, 8ft Hose with Chemetron Quick Connect, Adult Face
Mask, Child Face Mask



Demand Valve – DISS.....\$620.00

5040-D Includes:
Demand Valve, 8ft Hose with Hand-Tight DISS Connection, Adult Face
Mask, Child Face Mask



EMERGENCY OXYGEN EQUIPMENT

REPLACEMENT PARTS



5041-10A

“E” Cylinder Cart

\$160.00



9033C

Child Face Mask
Clear with Chin Support Cup
22mm I.D. Connection

\$50.00



9033A

Adult Face Mask
Clear with Chin Support Cup
22mm I.D. Connection

\$50.00



6006

Single High Pressure Gauge
50psi Pre-Set

\$338.00



6007

Adjustable Flow
Liter Flow 0-15 LPM

\$360.00



5014-32

Cylinder Wrench

\$10.00

HOSE ASSEMBLIES PLEASE SPECIFY LENGTH




DISS Style DISS Nut X DISS Nut

	8005	Oxygen	\$86.00 1-5 ft		8007	Vacuum	\$86.00 1-5 ft
	8006	Nitrous Oxide	\$86.00 1-5 ft		8008	Nitrogen	\$86.00 1-5 ft




QUICK CONNECT STYLE – MALE QUICK CONNECT X DISS NUT

Scavenger Assemblies - Male Quick Connect X Scavenger Adapter Kit (All manufactures)

Puritan

	8000-PN	Oxygen	\$99.00 1-5 ft
	8001-PN	Nitrous Oxide	\$99.00 1-5 ft
	8010-PN	Scavenging (Vacuum)	\$99.00 1-5 ft

Chemetron (NCG)

	8000-CN	Oxygen	\$99.00 1-5 ft
	8001-CN	Nitrous Oxide	\$99.00 1-5 ft
	8010-CN	Scavenging (Vacuum)	\$99.00 1-5 ft

Ohio (Matrx)

	8000-OH	Oxygen	\$99.00 1-5 ft
	8001-OH	Nitrous Oxide	\$99.00 1-5 ft
	8010-OH	Scavenging (Vacuum)	\$99.00 1-5 ft

Oxequip

	8000-OP	Oxygen	\$99.00 1-5 ft
	8001-OP	Nitrous Oxide	\$99.00 1-5 ft
	8010-OP	Scavenging (Vacuum)	\$99.00 1-5 ft

Porter/Accutron (Specify Porter or Accutron)

	8060	Oxygen/ Nitrous Oxide Duplex	\$199.00 1-5 ft		8010-PR	Scavenging (Vacuum)	\$99.00 1-5 ft
---	------	------------------------------------	--------------------	--	---------	---------------------	-------------------

HOSE ASSEMBLIES PLEASE SPECIFY LENGTH

FEMALE QUICK COUPLERS X DISS NUT

Puritan



8000-
PNF

Oxygen

\$206.00
1-5 ft



8001-
PNF

Nitrous
Oxide

\$206.00
1-5 ft



8002-
PNF

Vacuum

\$206.00
1-5 ft

Chemetron (NCG)



8000-
CNF

Oxygen

\$206.00
1-5 ft



8001-
CNF

Nitrous
Oxide

\$206.00
1-5 ft



8002-
CNF

Vacuum

\$206.00
1-5 ft

Ohio (Matrix)



8000-
OHF

Oxygen

\$206.00
1-5 ft



8001-
OHF

Nitrous
Oxide

\$206.00
1-5 ft



8002-
OHF

Vacuum

\$206.00
1-5 ft

Oxequip



8000-
OPF

Oxygen

\$206.00
1-5 ft



8001-
OPF

Nitrous
Oxide

\$206.00
1-5 ft



8002-
OPF

Vacuum

\$206.00
1-5 ft

Porter/Accutron (Specify Porter or Accutron)



8060-
PRF

Oxygen/
Nitrous
Oxide
Duplex

\$399.00
1-5 ft



8002-
PRF

Vacuum

\$206.00
1-5 ft

HOSE ASSEMBLIES PLEASE SPECIFY LENGTH

MALE X FEMALE QUICK CONNECT

Puritan



8000-
PNF/M

Oxygen

\$260.00
1-5 ft



8001-
PNF/M

Nitrous
Oxide

\$260.00
1-5 ft



8002-
PNF/M

Vacuum

\$260.00
1-5 ft

Chemetron (NCG)



8000-
CNF/M

Oxygen

\$260.00
1-5 ft



8001-
CNF/M

Nitrous
Oxide

\$260.00
1-5 ft



8002-
CNF/M

Vacuum

\$260.00
1-5 ft

Porter/Accutron (Specify Porter or Accutron)



8060-
PRF/M

Oxygen/
Nitrous
Oxide
Duplex

\$492.00
1-5 ft



8002-
PRF/M

Vacuum

\$260.00
1-5 ft

Ohio (Matrix)



8000-
OHF/M

Oxygen

\$260.00
1-5 ft



8001-
OHF/M

Nitrous
Oxide

\$260.00
1-5 ft



8002-
OHF/M

Vacuum

\$260.00
1-5 ft

Oxequip



8000-
OPF/M

Oxygen

\$260.00
1-5 ft



8001-
OPF/M

Nitrous
Oxide

\$260.00
1-5 ft



8002-
OPF/M

Vacuum

\$260.00
1-5 ft

HOSE ACCESSORIES / MISC.

Bulk Hose \$6.00/ft

- 8170 Oxygen Hose
- 8171 Nitrous Oxide Hose
- 8172 Braided Vacuum Hose
- 8177 Clear Vacuum Hose
- 8173 Nitrogen Hose



Ferrules \$2.00/each

8174



Crimping Tool.....\$130.00

8175



QUICK CONNECTS / COUPLERS

MALE QUICK CONNECTS X MALE DISS

Scavenger (vacuum) Connectors are Male Quick Connect x 1/4" Hose Barb

Puritan



8151-PN Oxygen \$78.00



8152-PN Nitrous Oxide \$78.00



8153-PN Vacuum \$78.00

Chemetron (NCG)



8151-CN Oxygen \$78.00



8152-CN Nitrous Oxide \$78.00



8153-CN Vacuum \$78.00

Ohio (Matrx)



8151-OH Oxygen \$78.00



8152-OH Nitrous Oxide \$78.00



8153-OH Vacuum \$78.00

Oxequip



8151-OP Oxygen \$78.00



8152-OP Nitrous Oxide \$78.00



8153-OP Vacuum \$78.00

Porter/Accutron



8153-PR

Vacuum

\$78.00

COUPLERS ONLY X MALE 1/4 NPT

Puritan



8011-PN Oxygen \$160.00



8012-PN Nitrous Oxide \$160.00



8013-PN Vacuum \$160.00

Chemetron (NCG)



8011-CN Oxygen \$160.00



8012-CN Nitrous Oxide \$160.00



8013-CN Vacuum \$160.00

Ohio (Matrx)



8011-OH Oxygen \$160.00



8012-OH Nitrous Oxide \$160.00



8013-OH Vacuum \$160.00

SHUT-OFF VALVES

¼ TURN SHUT-OFF VALVE WITH DISS CHECK VALVE – SOLDER TYPE

Ideal for cabinetry etc. instead of outlet stations. Additional DISS check valve remains closed until hose is connected to prevent inadvertent opening of valve. Available in kits with DISS/DISS hoses and DISS hose by female quick connect couplers.
NOTE: Valves with hose assemblies available in 1-5ft lengths. Please specify length desired.

Shut-Off Valve Only – Oxygen/Nitrous Oxide



7302

Nitrous Oxide Shut-Off Valve Assembly

\$122.00



7304

Oxygen Shut-Off Valve Assembly

\$122.00

Shut-Off Valves with DISS X DISS Hoses – Oxygen/Nitrous Oxide

\$338.00

7303

Includes:

Set of Oxygen/Nitrous Oxide Shut-Off Valves and DISS X DISS Hoses



Shut-Off Valves with DISS X Quick Connect Coupler Hoses – Oxygen/Nitrous Oxide

\$614.00

Includes:

- 7305-PN Set of Oxygen/Nitrous Oxide Shut-Off Valves and DISS X Puritan Quick Connect Coupler Hoses (pictured)
- 7305-OH Set of Oxygen/Nitrous Oxide Shut-Off Valves and DISS X Ohio Quick Connect Coupler Hoses
- 7305-CN Set of Oxygen/Nitrous Oxide Shut-Off Valves and DISS X Chemetron Quick Connect Coupler Hoses
- 7305-PR Set of Oxygen/Nitrous Oxide Shut-Off Valves and DISS X Porter/Accutron Quick Connect Coupler Hoses



Vacuum Shut-Off Valve

\$122.00

7306

Includes:

Vacuum Shut-Off Valve Assembly



Vacuum Shut-Off Valves and Assemblies.....

\$308.00

Includes:

- 7306-PNF Vacuum Shut-Off Valve and DISS X Puritan Quick Connect Coupler Hose (pictured)
- 7306-OHF Vacuum Shut-Off Valve and DISS X Ohio Quick Connect Coupler Hose
- 7306-CNF Vacuum Shut-Off Valve and DISS X Chemetron Quick Connect Coupler Hose
- 7306-PRF Vacuum Shut-Off Valve and DISS X Porter/Accutron Quick Connect Coupler Hose
- 7306-DX Vacuum Shut-Off Valve and DISS X Scavenger Adapter Kit Hose



OUTLET STATIONS QUICK CONNECT - O2/N2O/VAC



**PURITAN
BELMED**



**OHIO/OHMEDA
MATRIX**



**CHEMETRON (NCG)
COASTAL
EARLY PORTER**



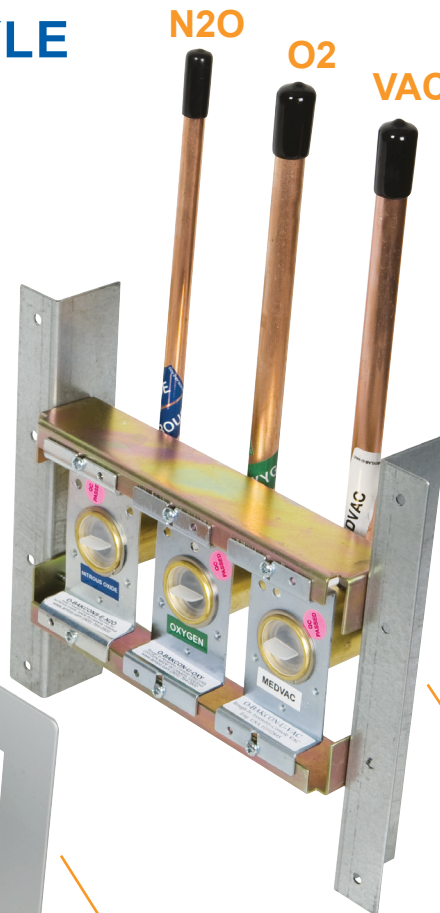
**OXEQUIP
CAMBIARE
PREVIOUSLY BELMED**

BELMED, PURITAN STYLE OUTLET STATION

EXPLODED DIAGRAM OF #6500-PN
CONCEALED OUTLET STATION

Latch assemblies also
available for Ohio (OH) and
Chemetron (CN) connectors

Latch Plate
Assembly



Cover Plate

Pipelines
on 2 1/2"
centers

N2O always
located to
left of O2

N2O O.D.
pipe size
is 3/8" - All
others are
1/2" O.D.

Rough-in
Assembly

OUTLETS

SINGLE OUTLETS - CONCEALED\$204.00

Nitrous Oxide

6100-PN	Puritan style
6100-OH	Ohio Style
6100-CN	Chemetron

Oxygen

6000-PN	Puritan style
6000-OH	Ohio Style
6000-CN	Chemetron

Vacuum

6200-PN	Puritan style
6200-OH	Ohio Style
6200-CN	Chemetron



DOUBLE OUTLETS - CONCEALED\$322.00

Please specify gases: (Pick Two)
Nitrous Oxide, Oxygen, or Vacuum

6600-PN	Puritan style
6600-OH	Ohio Style
6600-CN	Chemetron



TRIPLE OUTLETS - CONCEALED\$540.00

Nitrous Oxide, Oxygen, & Vacuum

6500-PN	Puritan style
6500-OH	Ohio Style
6500-CN	Chemetron



EXPOSED OUTLETS\$240.00

Nitrous Oxide

6150-PN	Puritan style
6150-OH	Ohio Style
6150-CN	Chemetron

Oxygen

6050-PN	Puritan style
6050-OH	Ohio Style
6050-CN	Chemetron

Vacuum

6250-PN	Puritan style
6250-OH	Ohio Style
6250-CN	Chemetron



OUTLETS

DOUBLE OUTLET - CABINET MOUNT
OUTLET CONNECTION BY DISS\$370.00

Please specify Gases:(Pick Two)
Nitrous Oxide, Oxygen, or Vacuum

- 6600-DX-PN Puritan style
- 6600-DX-OH Ohio Style
- 6600-DX-CN Chemetron



TRIPLE OUTLETS - CABINET MOUNT
OUTLET CONNECTION BY DISS\$574.00

Nitrous Oxide, Oxygen, & Vacuum

- 6500-DX-PN Puritan style
- 6500-DX-OH Ohio Style
- 6500-DX-CN Chemetron



OXEQUIP OUTLETS

Contact Factory for Ordering Information and Pricing



OUTLET REPLACEMENT PARTS

LATCH PLATE ASSEMBLIES - CONCEALED OUTLETS.....\$82.00

Puritan



6010-PN-O2 Oxygen



6010-PN-N2O Nitrous Oxide



6010-PN-VAC Vacuum

Chemetron



6010-CN-O2 Oxygen



6010-CN-N2O Nitrous Oxide



6010-CN-VAC Vacuum

Ohio



6010-OH-O2 Oxygen



6010-OH-N2O Nitrous Oxide



6010-OH-VAC Vacuum

DISS



6010-DISS-O2 Oxygen



6010-DISS-N2O Nitrous Oxide



6010-DISS-VAC Vacuum



6010-DISS-N2 Nitrogen

OUTLET REPLACEMENT PARTS

LATCH PLATE ASSEMBLIES -
EXPOSED OUTLETS.....\$82.00

Puritan



6015-PN-O2

Oxygen



6015-PN-N2O

Nitrous Oxide



6015-PN-VAC

Vacuum

Ohio



6015-OH-O2

Oxygen



6015-OH-N2O

Nitrous Oxide



6015-OH-VAC

Vacuum

Chemetron



6015-CN-O2

Oxygen



6015-CN-N2O

Nitrous Oxide



6015-CN-VAC

Vacuum

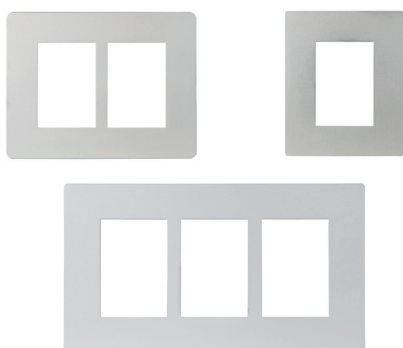
OUTLET REPLACEMENT PARTS



ROUGH – IN ASSEMBLIES, CONCEALED

PLEASE SPECIFY GASES

6011	Single Outlet	\$108.00
6012	Double Outlet	\$214.00
6013	Triple Outlet	\$324.00



COVER PLATES

6021	Single, Concealed	\$32.00
6022	Double, Concealed	\$42.00
6023	Triple, Concealed	\$52.00

EXPOSED OUTLET BOX

6025	Exposed Single Box	\$108.00
------	--------------------	----------



OUTLET PARTS - PURITAN, OHIO, CHEMETRON



6024A	PURITAN Oxygen or Nitrous Oxide Latch Plate Repair Kit	\$54.00
6024B	OHIO OR CHEMETRON Oxygen or Nitrous Oxide Latch Plate Repair Kit	\$54.00
6024-PN	PURITAN Vacuum Latch Plate Repair Kit	\$54.00
6024-OH	OHIO Vacuum Latch Plate Repair Kit	\$54.00
6024-CN	CHEMETRON Vacuum Latch Plate Repair Kit	\$54.00

OUTLET REPLACEMENT PARTS

OUTLET PARTS - PURITAN, OHIO, CHEMETRON - (CONTINUED)



6024

Rough – In Repair Kit

\$54.00

OUTLET PARTS - OXEQUIP



1227-V

Rebuild Kit – Vacuum

\$82.00



1227-PK

Rebuild Kit – All Gases (Except Vacuum)

\$82.00



1207

Tumbler (Specify Gas)

\$82.00



1227-M

Cam Plate

\$82.00



1227-2

Mounting Ring

\$82.00



1217-10

Seat Seals (6/Pk)

\$82.00

COVER PLATES - OXEQUIP

1827-1C

Cover Plate – Single – Concealed

\$42.00

1827-2C

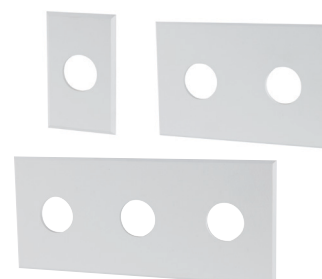
Cover Plate – Double – Concealed

\$62.00

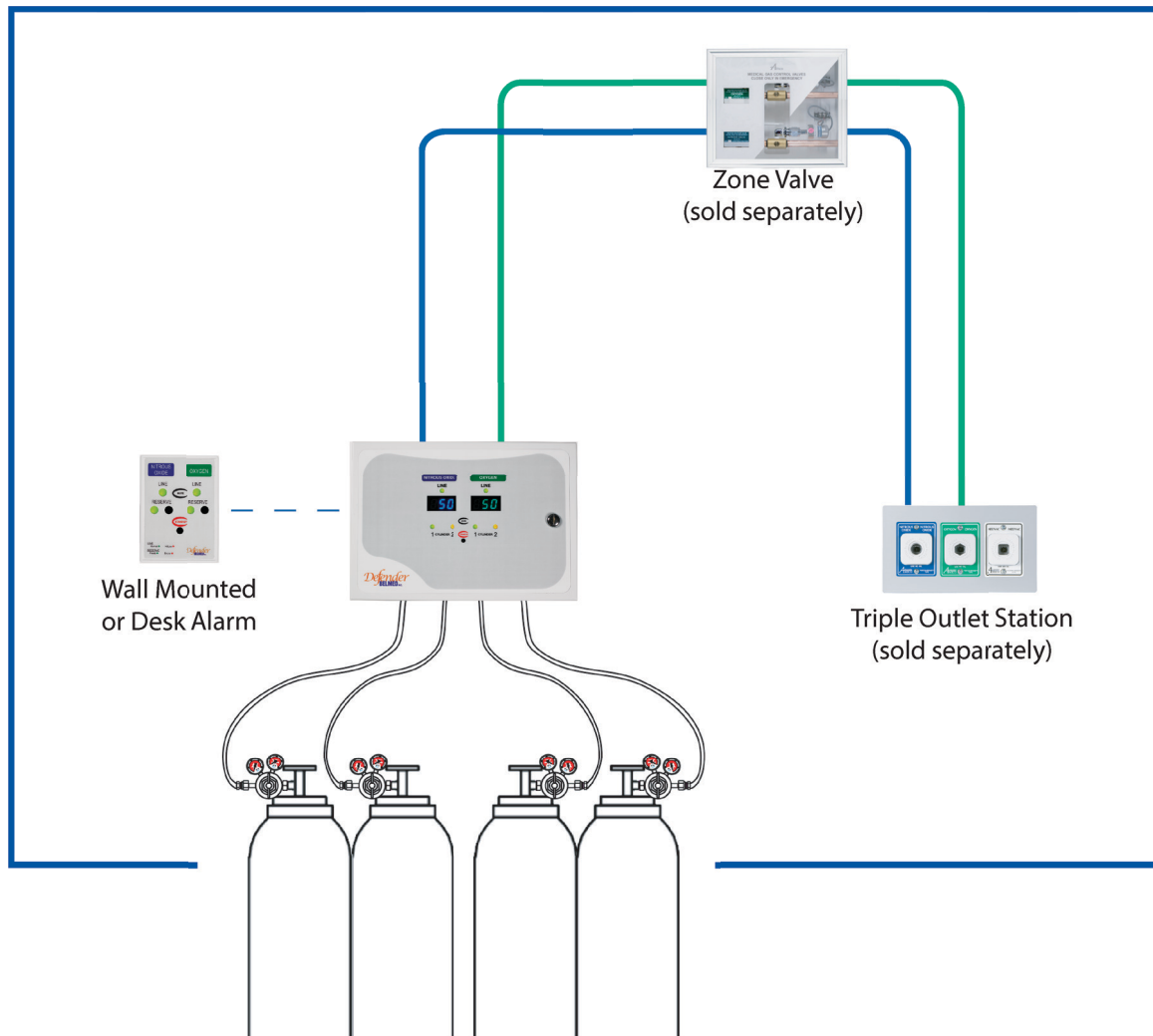
1827-3C

Cover Plate – Triple – Concealed

\$82.00



Defender AUTOMATIC CHANGEOVER MANIFOLD



The Belmed *Defender* Automatic Changeover Manifold is the perfect manifold solution for your dental nitrous oxide delivery system. The Defender can accommodate two cylinders for both oxygen and nitrous oxide. This manifold is fully automatic and will switch from “In-Use” to “Reserve” tank without fluctuations in the gas delivery. The “Empty” indicator will remain lit until a new cylinder is connected and the appropriate pressure is detected by the manifold. The system is auto-sensing... no need to manually reset the manifold after a cylinder change.

- Easy to read LED display clearly shows gas pressures and cylinder status
- Automatic detection of cylinder pressure, no manual reset is required
- Medical grade sensors that give you the reliability you need
- Integrated Dry Contacts for additional remote monitoring
- Complies with NFPA 99

Defender AUTOMATIC CHANGEOVER MANIFOLD SYSTEMS



Defender Automatic Changeover Manifold System with Alarm & Pre Install Kit \$4,900.00

- A100 Manifold System with Wall Alarm & Pre-Install Kit
 A101 Manifold System with Desk Alarm & Pre-Install Kit

Includes:

Automatic Changeover Manifold, Alarm, Regulators, Hoses, Tank Restraints, and Pre-Install Kit

Defender Automatic Changeover Manifold System with Alarm \$4,680.00

- A120 Manifold System with Wall Alarm
 A121 Manifold System with Desk Alarm

Includes:

Automatic Changeover Manifold, Alarm, Regulators, Hoses, and Tank Restraints



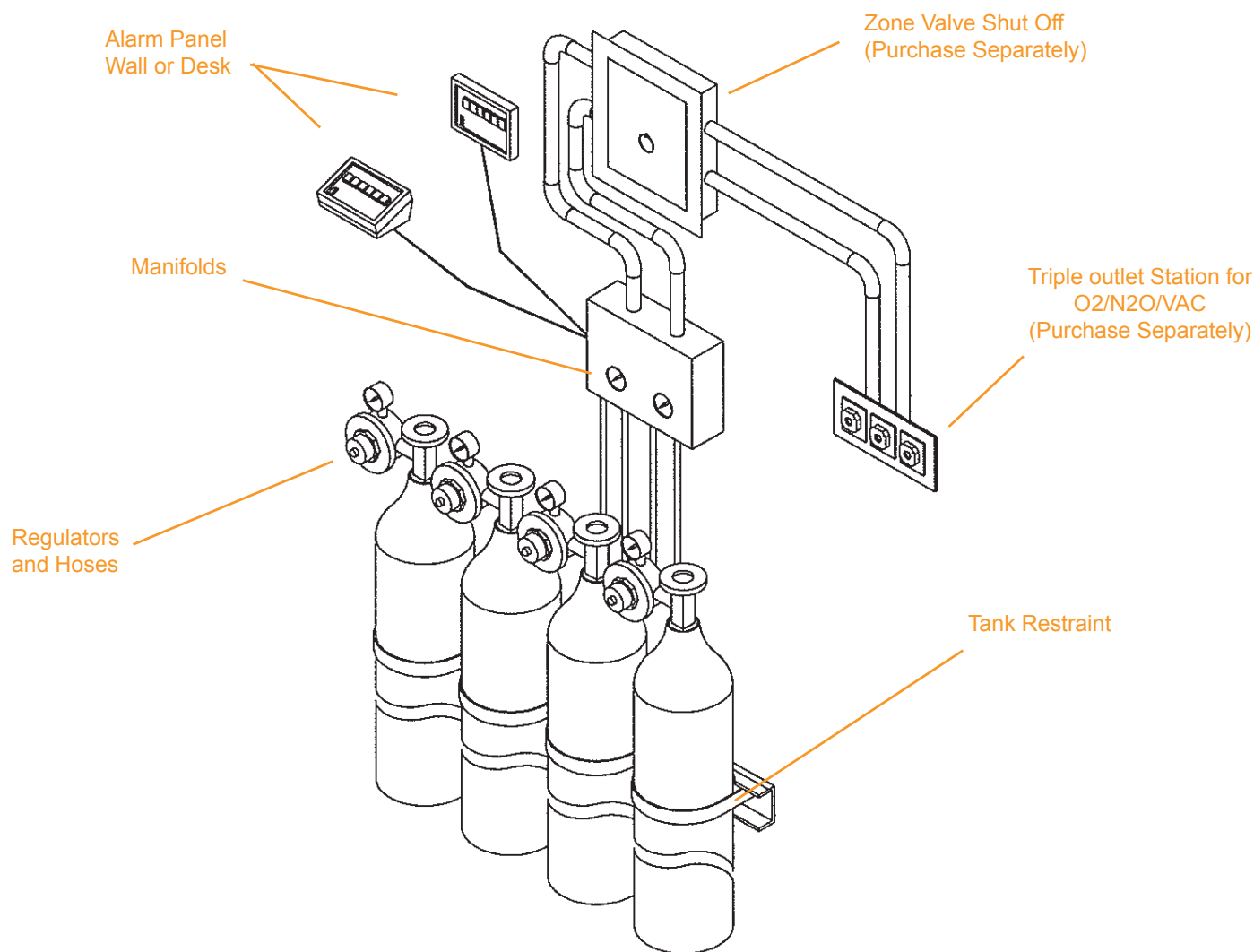
Defender Zone Valve \$1,350.00

- 4054 Includes:
 Zone Valve for Defender Automatic Changeover Manifold and Cable

ADDITIONAL ACCESSORIES

	4024-0050	Defender O2 Pipeline Connector	\$72.00		8191	Transformer Desk Style Alarm 12VAC	\$80.00
	4024-0051	Defender N2O Pipeline Connector	\$72.00		4024-0060-001	Defender Cable (100ft)	\$80.00
	4022BA-28	O2 Gas Identification Label (6 Pkg)	\$10.00		4054-0002-001	Defender Zone Valve Cable	\$2.50/ft
	4022BA-30	N2O Gas Identification Label (6 Pkg)	\$10.00		8138-N	Tank Restraint Holds two G/H Size Cylinders	\$112.00

MANIFOLD SYSTEM



MANIFOLD SYSTEM DIMENSIONS

11.5"H X 9.25"W X 3"D

ALARM SIZE

WALL - 5"H X 7"W X 0.75"D

DESK - 5"H X 7"W X 4"D

RELIEF VALVE PRESSURE

75 PSI

NORMAL WORKING PRESSURE

50-55 PSI

MAXIMUM HOSE PRESSURE

250 PSI (1000 PSI BURST)

HOSE LENGTH

48"

OUTLET LINE SIZE

OXYGEN :

1/2" OD COPPER

NITROUS OXIDE:

3/8" OD COPPER

LOW PRESSURE ALARM POINT

40 PSI

HIGH PRESSURE ALARM POINT

65 PSI

PRIMARY VOLTAGE TO ALARM

12 VAC

WIRE

MANIFOLD TO ALARM:
50' - 5 CONDUCTOR/22 GA. PLENUM

TRANSFORMER TO ALARM:
30' - 2 CONDUCTOR/22 GA. PLENUM

FUSE

5 MM X 20 MM - 0.5 AMP

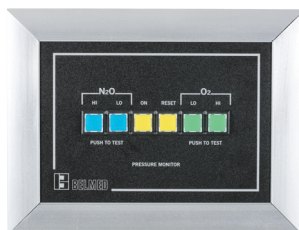
NFPA 99

CATEGORY 3 COMPLIANT

MANIFOLD SYSTEM O2/N2O COMPLETE SYSTEMS

2 Oxygen / 2 Nitrous Oxide Cylinders Wall Alarm System \$3,170.00

2022-W Includes:
Manifold, Alarm, Cables, Regulators, Hoses, Tank Restraints.



2 Oxygen / 2 Nitrous Oxide Cylinders Desk Alarm System \$3,170.00

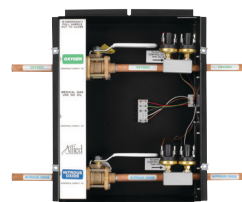
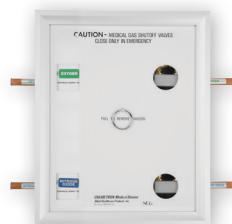
2022-D Includes:
Manifold, Alarm, Cables, Regulators, Hoses, Tank Restraints.



Zone Valve Shut-Off \$1,098.00

4050 Includes:
Frangible Cover, O2/N2O ¼ Turn Shut-Offs,
Alarm Pressure Switches
Dimensions: 15"H x 12"W x 4"D

* Designed for recessed installation
but may be surface mounted



Pre-Install Kit \$208.00

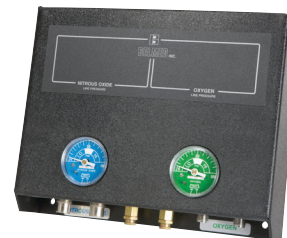
2000-W Wall Alarm Pre-Install Kit
2000-D Desk Alarm Pre-Install Kit

Includes:
Pipeline Connectors, necessary cables and alarm mounting arrangement for wall or desk style alarm

O2/N2O MANIFOLD SYSTEM COMPONENTS

Manifold Only \$1,300.00

4022BA 2 Oxygen / 2 Nitrous Oxide Cylinder(s) Manifold



Wall Alarm Kit \$850.00

3000-W Includes:
Alarm, Transformer, Cable.



Desk Alarm Kit \$850.00

3000-D Includes:
Alarm, Transformer, Cable.



OXYGEN MANIFOLD SYSTEMS

2 Oxygen Cylinders Wall Alarm System \$2,225.00

2020-W Includes:
Manifold, Alarm, Transformer,
Cables, Regulators, Hoses,
Tank Restraints



2 Oxygen Cylinders Desk Alarm System \$2,225.00

2020-D Includes:
Manifold, Alarm, Transformer, Cables,
Regulators, Hoses, Tank Restraints



SYSTEM COMPONENTS

Oxygen Manifold – 2 Cylinders \$1,012.00

4020BA Oxygen Manifold – 2 Cylinders



Oxygen Wall Alarm Kit \$768.00

3200-W Includes:
Alarm, Transformer, Cables



Oxygen Desk Alarm Kit \$768.00

3200-D Includes:
Alarm, Transformer, Cables



MANIFOLD SYSTEM REPLACEMENT PARTS

	8192	Oxygen Pipeline Connector O2 DISS Nut X 1/2" O.D. Tube (6" Length)	\$64.00		8140-P	Cable, 2 Conductor Transformer to Alarm, Plenum	\$0.90 per ft.
	8193	Nitrous Oxide Pipeline Connector N2O DISS Nut X 3/8" O. D. Tube (6" Length)	\$64.00		8141-P	Cable, 3 Conductor Manifold to Alarm (Oxygen Only Manifold), Plenum	\$1.50 per ft.
	4000-6O2	Oxygen Gauge 2" Diameter Male 1/4" NPT C.B. Connection	\$64.00		8190-UL	Transformer Wall Style Alarm 12VAC	\$75.00
	4000-6N2O	Nitrous Oxide Gauge 2" Diameter Male 1/4" NPT C.B. Connection	\$64.00		8191	Transformer Desk Style Alarm 12VAC	\$75.00
	8137	Relief Valve Preset 75psi for Oxygen or Nitrous Oxide	\$64.00		7382	Alarm Bulbs (Specify Alarm Serial #) 6 Pack	\$30.00
	8138-N	Tank Restraint Holds two G/H Size Cylinders	\$112.00		8135	Manifold Check Valve – Oxygen Male 1/8" NPT X O2 Male DISS	\$50.00
	8139-P	Cable, 5 Conductor Manifold to Wall Alarm, Plenum	\$1.60 per ft.		8136	Manifold Check Valve – Nitrous Oxide Male 1/4" NPT X N2O Male DISS	\$50.00
	8139D-P	Cable, 5 Conductor Manifold to Desk Alarm, Plenum	\$1.60 per ft.		76059 76068	Pressure Switch High 65psi (Specify Gas) Pressure Switch Low 40psi (Specify Gas)	\$98.00

ORAL SURGERY PACKAGES

Oral Surgery Flowmeter System with 4 Cylinder Yoke Block \$5,100.00

- 9027 Includes:
PC 7 Head, Scavenger Rubber Goods, "Y" Selector Valve Package,
Tall Mobile Stand, 4 Cylinder Yoke Block, DISS Hoses (3ft.)



Oral Surgery Flowmeter System with Telescoping Arm..... \$3,448.00

- 9028 Includes:
PC 7 Head, Scavenger Rubber Goods, "Y" Selector Valve Package,
Telescoping Arm



Flowmeter "Y" Selector Valve Package \$950.00

- 9030 Includes:
"Y" Selector Valve, Breathing Tube, Non-Rebreathing Valve,
Child Full Face Mask, Adult Full Face Mask



COMPONENTS - "Y" SELECTOR VALVE



9031

"Y" Selector Valve
Connection: 22mm O.D. – Ports: 22mm O.D. X 15mm I.D.

\$616.00



9032

Non-Rebreathing Valve
Positive Pressure Thumb Button Adjustable Relief Valve 90°

\$240.00



9033C

Child Face Mask
Clear with Chin Support Cup – 22mm I.D. Connection

\$50.00



9033A

Adult Face Mask
Clear with Chin Support Cup – 22mm I.D. Connection

\$50.00



5025

Breathing Tube
22mm I. D. X 32" Length, Corrugated

\$35.00

ORAL SURGERY

SURGICAL SUCTION VACUUM COLLECTION UNITS



	PURITAN		
	9200-PN	Includes: Vacuum Regulator, 6' Clear Vacuum Tubing, Wall Plate, Canister Holder, Six 1500 ml Single-Use Canisters	\$740.00
	OHIO		
	9200-OH	Includes: Vacuum Regulator, 6' Clear Vacuum Tubing, Wall Plate, Canister Holder, Six 1500 ml Single-Use Canisters	\$740.00
	CHEMETRON		
	9200-CN	Includes: Vacuum Regulator, 6' Clear Vacuum Tubing, Wall Plate, Canister Holder, Six 1500 ml Single-Use Canisters	\$740.00
	OXEQUIP		
	9200-OP	Includes: Vacuum Regulator, 6' Clear Vacuum Tubing, Wall Plate, Canister Holder, Six 1500 ml Single-Use Canisters	\$740.00



9200-0001	Vacuum Regulator	\$510.00
-----------	------------------	----------



9200-0002	Replacement Canisters Six 1500 ml Single-Use Canisters	\$82.00
-----------	---	---------



9200-0003	Canister Holder	\$50.00
-----------	-----------------	---------



9200-0004	Wall Plate	\$75.00
-----------	------------	---------



8177X6	Clear Vacuum Tube	\$35.00
--------	-------------------	---------

**ORAL SURGERY
NITROGEN MANIFOLD SYSTEMS**

2 Nitrogen Cylinders System..... \$1,950.00

8182 Includes:
Manifold, Regulators,
Hoses, Tank Restraints



3 Nitrogen Cylinders System..... \$2,260.00

8183 Includes:
Manifold, Regulators, Hoses,
Tank Restraints



NITROGEN MANIFOLD COMPONENTS



8142 Nitrogen Manifold – 2 Cylinders \$907.00

8143 Nitrogen Manifold – 3 Cylinders \$999.00



8138-N Tank Restraint
Holds two G/H Size Cylinders \$112.00

NITROGEN OUTLET STATIONS – DISS



6300D-PN Nitrogen DISS Outlet – Concealed \$224.00



6350D-PN Nitrogen DISS Outlet – Exposed \$298.00

ORAL SURGERY

QUICK CONNECTORS FOR SURGICAL HAND PIECES



8156

Stryker Drill Adapter
Nitrogen DISS Hand-Tight Nut X Eastman
Quick Connect 90°

\$214.00



8157

Hall Drill Adapter
Nitrogen DISS Hand-Tight Nut X Schrader Coupler 90°

\$214.00



8156RS

Adjustable Pressure Regulator – Stryker
0-150psi with Gauge

\$344.00

8157RH

Adjustable Pressure Regulator – Hall
0-150psi with Gauge

\$344.00

OXYGEN FLOWMETER – RECOVERY ROOM



8160-PN

PURITAN QUICK CONNECT
Oxygen Therapy Flowmeter 0-15LPM

\$160.00

8160-OH

OHIO QUICK CONNECT
Oxygen Therapy Flowmeter 0-15LPM

\$160.00

8160-CN

CHEMETRON QUICK CONNECT
Oxygen Therapy Flowmeter 0-15LPM

\$160.00

8160-BD

BELMED PC7
Oxygen Therapy Flowmeter 0-15LPM

\$160.00

8160-PR

BELMED PC7-C/PORTOR QUICK CONNECT
Oxygen Therapy Flowmeter 0-15LPM

\$160.00

8160-DX

HAND-TIGHT DISS
Oxygen Therapy Flowmeter 0-15 LPM

\$160.00



8161

High Concentration Mask with Breathing Bag
*Connects to Therapy Flowmeter with 7ft tubing

\$12.00

CANNULA ADAPTER



5046

Cannula Adapter

\$80.00



5047

Nasal Cannula
50/Box

\$136.00

REGULATORS

SINGLE HIGH PRESSURE GAUGE – 50PSI PRE-SET



6001

Oxygen

\$326.00



6002

Nitrous Oxide

\$326.00

TWO GAUGE ADJUSTABLE PRESSURE



6003

Nitrogen

\$356.00



6004

Oxygen

\$410.00



6005

Nitrous Oxide

\$410.00

YOKE STYLE REGULATORS



6006

Single High Pressure Gauge – 50psi Pre-Set

\$338.00



6007

Adjustable Flow

\$360.00

FITTINGS

Note: Please specify Medical Gas Symbol for all DISS fittings:
 O2: Oxygen • N2O: Nitrous Oxide • VAC: Vacuum • N2: Nitrogen



8020

Male 1/8 NPT X Male DISS
(Specify Gas)

\$40.00



8021

Male 1/4 NPT X Male DISS
(Specify Gas)

\$40.00



8125

1/4 Hose Barb X Female
DISS (Specify Gas)

\$40.00



8126

Pressure Activated Check
Valve Male 1/8 NPT X Male
DISS (Specify Gas)

\$50.00

8127

Pressure Activated Check
Valve Male 1/4 NPT X Male
DISS (Specify Gas)

8128

Hose Activated Check Valve
Male 1/8 NPT X Male DISS
(Specify Gas)

\$50.00

8129

Hose Activated Check Valve
Male 1/4 NPT X Male DISS
(Specify Gas)

8130-F

1/4 Hose Barb X Female 1/8
NPT

\$50.00

8131-F

1/4 Hose Barb X Female 1/4
NPT

8130-M

1/4 Hose Barb X Male 1/8
NPT

\$50.00

8131-M

1/4 Hose Barb X Male 1/4
NPT

8132

Elbow – Female 1/8 NPT X
Female 1/8 NPT (Specify 45°
or 90°)

\$30.00

8133

Elbow – Female 1/4 NPT X
Female 1/4 NPT (Specify 45°
or 90°)

8164

Elbow – Male 1/8 NPT X
Female 1/8 NPT (Specify 45°
or 90°)

\$30.00

8165

Elbow – Male 1/4 NPT X
Female 1/4 NPT (Specify 45°
or 90°)

8166

Tee – Female 1/8 NPT

\$30.00

8167

Tee – Female 1/4 NPT



8147

Tee – Male 1/8 NPT X
Female 1/8 NPT Ends

\$30.00

8148

Tee – Male 1/4 NPT X
Female 1/4 NPT Ends

8149-F

Coupler – Female 1/8 NPT X
Female 1/8 NPT

8149-M

Coupler – Male 1/8 NPT X
Male 1/8 NPT

8150-F

Coupler – Female 1/4 NPT X
Female 1/4 NPT

8150-M

Coupler – Male 1/4 NPT X
Male 1/4 NPT

\$30.00

Super 6 Special!

Buy 6 “complete”
systems and receive an
entire system FREE!*



Systems included: 5002-SH-S, 5002S,
5132-S, 5142-S, 5003-T-S, 5003-S-STA,
5003-S-SW, 5003S-DSW, 5004S, 2022-W,
2022-D, 2020-W, and 2020-D

Contact Belmed for details!

* Tanks shown not included in package. Scavenger package not included with free unit.

POLICIES

Terms: Net 30 Days. Accounts over 60 days past due will be placed on credit hold.
Prices: All prices are F.O.B. Red Lion, PA and subject to change without notice. **Minimum order \$25.00.**

WARRANTY

Definition of a Warranty Return: A product or part covered by the Belmed, Inc. warranty, that fails while the terms of the warranty are in effect.

THIS WARRANTY IS GIVEN IN PLACE OF ALL OTHER WARRANTIES, EXPRESS OR IMPLIED, OF MERCHANTABILITY, FITNESS FOR A PARTICULAR PURPOSE OR OTHERWISE.

No statement or claim about the product by any employee, agent, representative or dealer of Belmed Inc. shall constitute a warranty by Belmed Inc. or give rise to any liability or obligation of Belmed Inc.

Subject to the next sentence Belmed Inc., warrants that each product or part shall be free from defects in workmanship and materials, under normal use and with appropriate maintenance, for one (1) year from the date of delivery to customer. For plastic, rubber and disposable parts or items Belmed, Inc. warrants only that each such part and item shall be free from defects in workmanship and materials at the time of delivery to the customer.

Belmed Inc.'s obligation for breach of this warranty, or for negligence or otherwise, shall be strictly and exclusively limited to Belmed Inc.'s choice of repair or replacement of the product or part. ***This warranty shall be void for any product on which the serial number has been altered, defaced or removed.***

Belmed, Inc. shall not be liable for any damage, injury or loss arising out of the use of the product, whether as a result of a defect in the product or otherwise, if prior to such damage, injury or loss, the product was (1) damaged, misused, or misapplied; (2) repaired, altered or modified by persons other than Belmed, Inc. (3) not installed in strict compliance with applicable codes and ordinances; or (4) not installed by Belmed, Inc. or an authorized Belmed, Inc. dealer.

UNDER NO CIRCUMSTANCES SHALL BELMED INC. BE LIABLE FOR INCIDENTAL OR CONSEQUENTIAL DAMAGES AS THOSE TERMS ARE DEFINED IN THE UNIFORM COMMERCIAL CODE.

Equipment Repair - Repair Procedures:

Belmed, Inc. offers evaluation and repair service on all Belmed Products. We provide excellent turnaround on all products with customer approval for service-repair work. Initial \$35.00 inspection fee will be charged.

Shipping Procedures:

Products returned for repair will be accepted without a return authorization number. Specify that it is an item for repair and marked to the attention of the Repair Service Center.

Returning Goods:

1. The following will Not be accepted for credit:
 - Rubber goods over 30 days old
 - Rubber goods not in original, sealed package
 - All hoses
 - Special order items
 - Goods without a Return Goods Authorization (RA)
 - Merchandise more than 90 days old (from Belmed inc. invoice date.)
2. A 20% restocking charge will be deducted from the original purchase amount for all credits issued, except for return due to:
 - Belmed Inc. order entry error
 - Warranty returns
3. There is a minimum restocking charge of \$10.00
4. Return Authorization (RA) numbers are valid for 30 days after the date issued.
5. Freight charges will not be credited.
6. Freight collect shipments are not accepted.
7. If merchandise is found to have been misused or in any way damaged after shipment from Belmed Inc., credit will be made less charges for repair and less the 20% restocking charge. If merchandise is not salvageable, no credit will be issued.
8. All claims for damage or shortage occurring in transit must be made by the customer directly to the carrier.

Warranty Returns:

1. Merchandise returned for warranty credit or replacement must have been purchased from Belmed within the specified warranty period or proof of installation within that time will be required.
2. Defective items will, at Belmed Inc.'s discretion, either be repaired or replaced with equivalent merchandise.
3. If merchandise is found to not be defective the 20% restocking fee will be charged.
4. Freight charges to return defective merchandise to Belmed Inc. are not reimbursable.
5. Freight charges to ship replacement or repaired merchandise to customer will be paid by Belmed Inc.

Customer Instructions:

Please follow the procedures outlined below so there is no delay of credit to your account.

You must have a Return Authorization (RA) number before returning any merchandise to Belmed Inc. - except for out-of-warranty repairs for servicing. Credit may be issued only after the merchandise is returned to and inspected by Belmed Inc. and determination is made that credit is due.

To Receive a Return Authorization:

1. Call your Belmed Inc. Customer Service Representative.
2. Be prepared to provide the following information:
 - a. Our invoice number and date.
 - b. Product description, product number, and serial number (if applicable).
 - c. Reason you wish to return the merchandise.
3. Your Customer Service Representative will give you a RA number. A separate RA number will be provided for each Belmed Inc. invoice reference. The RA number authorizes our receiving department to accept the merchandise.
4. Enclose a copy of our original invoice.
5. Send the merchandise freight pre-paid.

Shortages:

Any shortages or discrepancies with orders must be reported to Belmed within 5 days ARO.

888-723-5893 • www.belmedinc.com

Order:

orders@belmedinc.com
Fax: 717-246-7586

Mail to:

PO Box 247
Red Lion, PA 17356-0247

Ship to:

887 Delta Rd.
Red Lion, PA 17356-0247

Contact Us:

717-246-5500
Fax: 717-246-7586
bmi@belmedinc.com

Tech Support:

help@belmedinc.com



Quality Since 1976